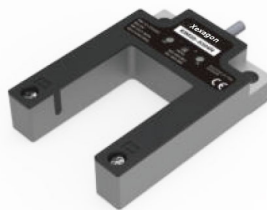


Wide Slot Type

KIM Series

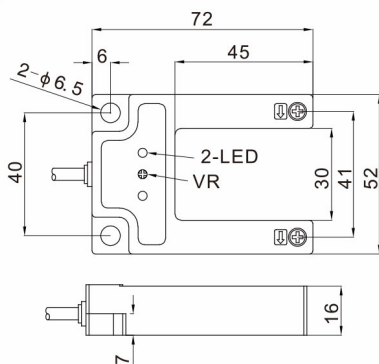


Appearance

Detection method	Thru-beam
Sensing distance	30mm
Output mode	NPN and PNP open collector
Switch mode	Selectable L.on/D.on
Standard test object	Opaque objects diameter>2mm
Output instructions	Yellow LED
Response time	≤1ms
Light source	Infrared LED (modulation)
Operating voltage	12~24V DC
Residual voltage	≤2.5V DC
Current consumption	≤15mA
Load current	≤200mA
Protective circuit	Reverse polarity protection, short circuit protection
Ambient temperature	-15℃~+55℃
Withstand voltage	1000V/AC 50/60Hz 1 minute
Shock resistance	10 to 50 Hz with 1.5mm amplitude for 2 hours each in X, Y, and Z directions
Impact resistance	500m/s ² (50G), 3 times in XYZ direction
Dielectric strength	≥50MΩ/500V DC
Protection degree	IP60
Material method	Aluminum alloy
Connection	2M 4core cable
Model No.	NPN D.on/L.on PNP D.on/L.on
	XKIM30-0304N XKIM30-0304P

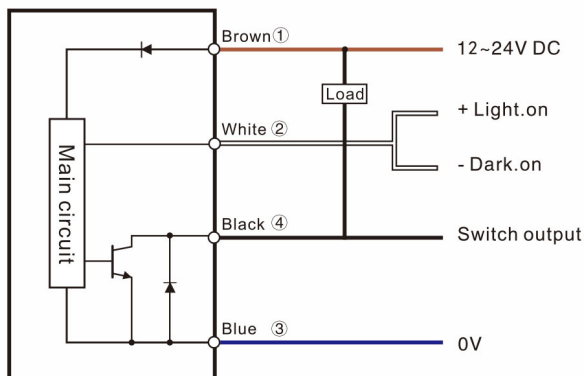
Dimensions

Unit: mm

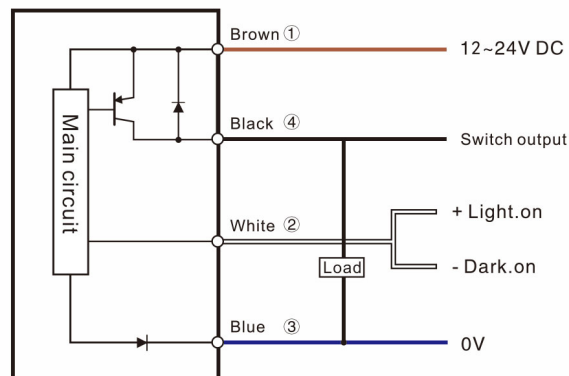


Circuit diagram

NPN



PNP



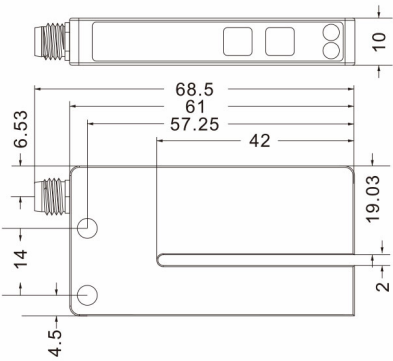


Appearance

Sensing distance	2mm
Slot depth	42mm
Slot width	3mm
Light source	Infrared light (940nm)
Switch mode	Selectable L.on/D.on
Operating voltage	12~24V DC \pm 10 %
No-load current	40mA
Load current	100mA
Response frequency	10KHz
Response time	$\leq 20 \mu s$
Protection circuit	Reverse polarity protection, Output short circuit protection; Interference suppression
Protection degree	IP65
Material	Aluminum
Connection method	M8 4-pin connector
Weight	35g
Output method	NPN/PNP
Ambient brightness	Sunlight ≤ 10000 Lux
Model No.	XKIM07-0204NP

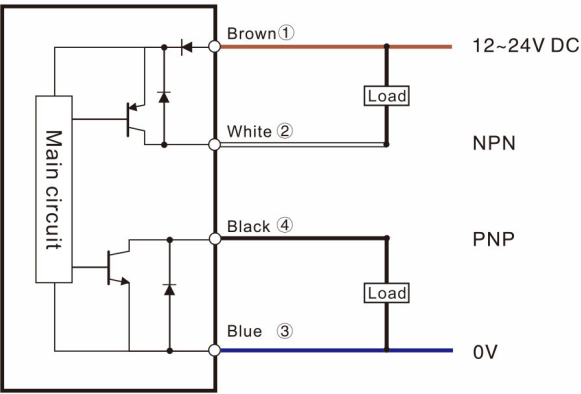
Dimensions

Unit: mm



Circuit diagram

NPN/PNP



Guidance

Slot type sensors

Micro slot type

Slot type

Wide slot type

Label detection