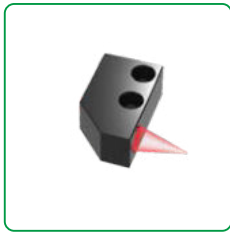
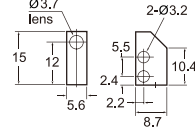


Diffuse reflection

XPF-5D

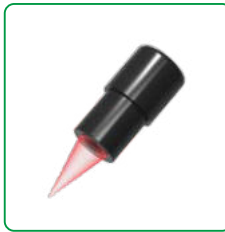


Housing:aluminum
Lens:glass

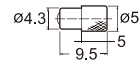


Diameter of beam: $\phi 0.5\sim 3$
Suit to M3 diameter fiber optic sensor
Focal distance: 8~30mm

XPF-3D



Housing:aluminum
Lens:plastic

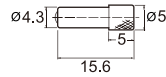


Size of pointed end: $\phi 4.3$
Diameter of beam: Approx. $\phi 4$ (Sensing distance: 0~20mm)
Suit to M3 diameter fiber optic sensor

XPF-2D



Housing:aluminum
Lens:plastic

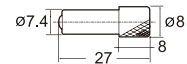


Size of pointed end: $\phi 4.3$
Diameter of beam: Approx. $\phi 0.4$
Suit to M3 diameter fiber optic sensor
Focal distance: 7 ± 2 mm

XPF-4D



Housing:aluminum
Lens:glass

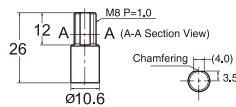


Size of pointed end: $\phi 7.4$
Diameter of beam: Approx. $\phi 0.5$
Suit to M3 diameter fiber optic sensor
Focal distance: 15 ± 2 mm

XPF-6D



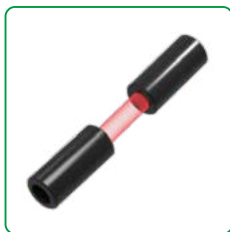
Housing:aluminum
Lens:glass



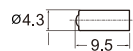
Size of pointed end: $\phi 10.6$
Diameter of beam: Approx. $\phi 2.0$
Suit to M3 diameter fiber optic sensor
Focal distance: 35 ± 2 mm

Thru-beam

XPF-4T



Housing:aluminum
Lens:glass



Size of pointed end: $\phi 4.3$
Suit to M2.6 diameter fiber optic sensor
Max.sensing distance: 3600mm

XPF-2T

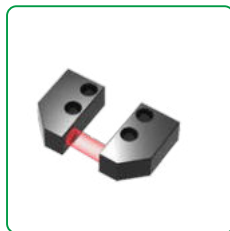


Housing:nickle plated brass
Lens:glass

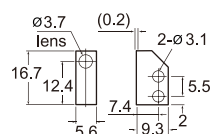


Size of pointed end: $\phi 4$
Suit to M2.6 diameter fiber optic sensor
Max.sensing distance: 3600mm

XPF-5T

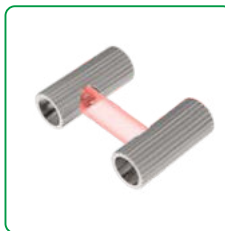


Housing:aluminum
Lens:glass



Suit to M2.6 diameter fiber optic sensor
Max.sensing distance: 3600mm

XPF-1T



Housing:nickle plated brass
Lens:acrylic



Size of pointed end: $\phi 4$
Suit to M2.6 diameter fiber optic sensor
Max.sensing distance: 3600mm

Fiber Optic

Slot Sensors

Photoelectric

Laser

Proximity

Displacement

Magnetic

Contact

Area

Ultrasonic

Vision

Vibration

Temperature

Annexes

Guidance

Fiber amplifiers

Standard economical

High stability

High performance type

High speed response

Fiber components

Popular type

Array-type

Flat bracket type

Side-view type

High elastic type

High temperature resistant

Small spot type

Combination type

High end type

Fiber lens

Fiber lens