

Economical Type

NEW!



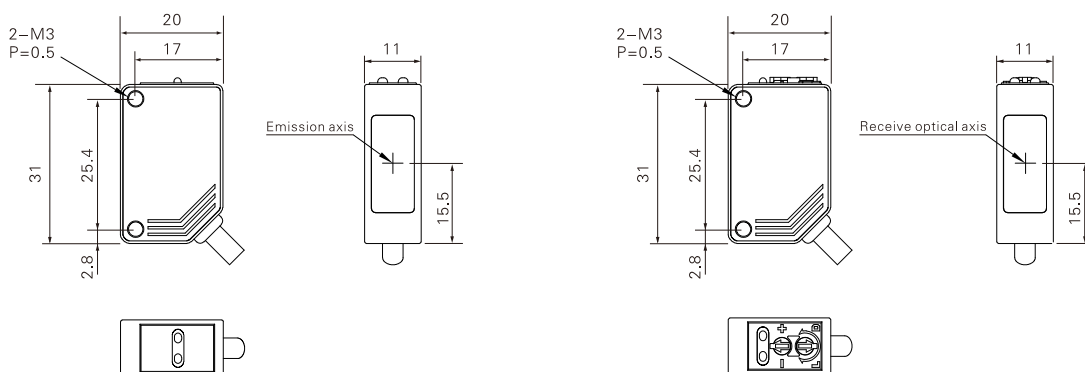
Appearance

Detection mode		Diffuse reflection—BGS	Diffuse reflection	Retro—reflection	Thru—beam
Detection distance		1—15cm	40cm	5m	30m
Set the distance		2—15cm	—	—	—
Spot diameter		± Ø1.5mm/15cm	± Ø1.5mm/40cm	± Ø20mm/5m	± Ø60mm/30m
Indicator light		Working indicator light: green; Action indicator: Red			
Sensitivity regulation		6 circle potentiometer	Single coil potentiometer		
Output mode		NPN or PNP open collector			
Switch mode		L.on (light—in action)/D.on (light—shielding action) can be switched			
Response time		≤2ms			
light source		Laser 650nm (modulation) Class 2			
Working voltage		10~30V DC			
Current consumption		≤20mA			
Environmental illumination		Incandescent lamp: 3000 lux or less / Sunlight: 5000 lux or less			
Ambient temperature		-25℃~+55℃, no freezing			
Ambient humidity		35%~85% RH, no condensation			
Protection circuit		Power reverse polarity protection, output reverse polarity protection, surge protection, short circuit protection Protection Power reverse polarity protection, surge protection, short circuit protection			Power reverse polarity protection, surge protection, short circuit protection
Degree of protection		IP65			
Material		PBT + glass fiber (shell), PMMA (lens)			
Way out		2M/3 core cable			
Anti-vibration		10~50Hz, 0.5mm amplitude, 2 hours each in X, Y, Z directions			
Accessories		Screwdriver			
Model No.	NPN	XELE-B15N	XELE-D40N	XELE-RM05N	XELE-TM30N
	PNP	XELE-B15P	XELE-D40P	XELE-RM05P	XELE-TM30P

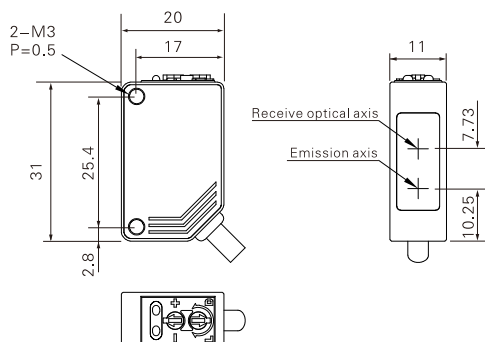
Dimensions

Unit: mm

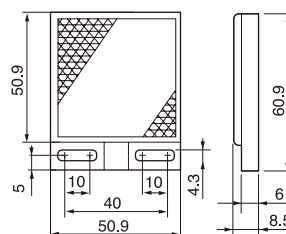
XELE-TM30N/P



XELE-B15N/P, XELE-D40N/P, XELE-RM05N/P



ELE-RM05 With reflector



(Optional TD-11)

Guidance

Laser sensors

Square

BGS

Transparent objects detection